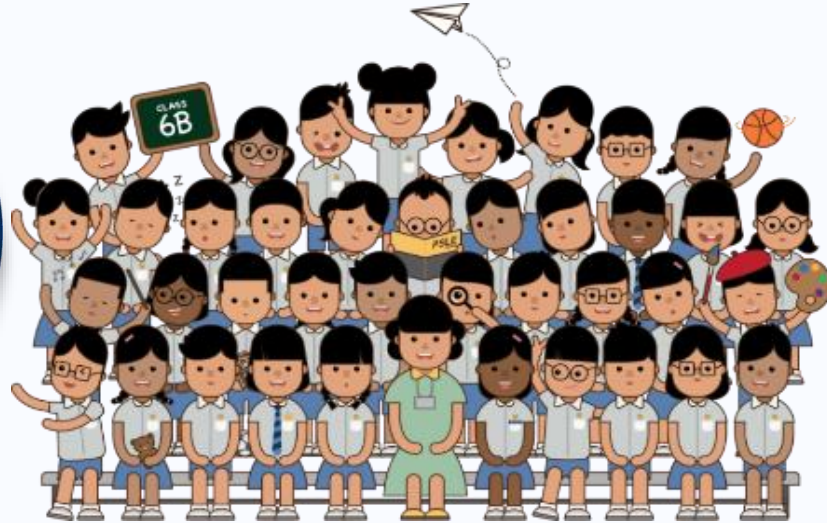
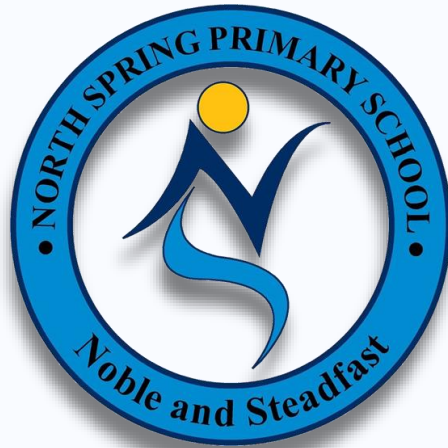


# North Spring Primary School



P6 Parents Talk  
Friday, 27 Jan 2023

# Programme

01

## Overview

Intent of PSLE

Parents' Support:  
Let's celebrate  
small successes

02

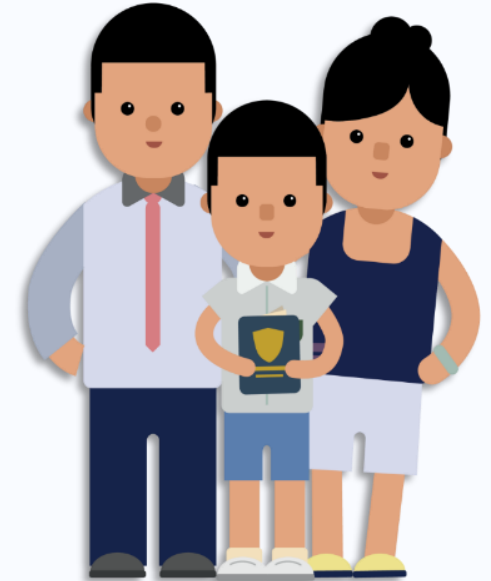
## PSLE Scoring System

What AL Scores  
Mean and Target  
Setting

03

## Secondary School Selection

Focusing on our  
children's  
strengths



*Confident*

*Cultured*

*Aspiring Learners*

# WHAT IS THE INTENT OF THE PSLE?

01



**A useful checkpoint at the end of primary school**

**A fair way to determine secondary school posting**

Over the years, we have been changing the education system to help our students discover and develop their strengths and interests, while moving away from an over-emphasis on academic results. Our PSLE Scoring changes reduce an over-emphasis on academic results by:

**1** Reducing fine differentiation of students' examination results at a young age.

**2**

**Recognising a student's level of achievement, regardless of how his/her peers have done.**

**3**

**Encouraging families to choose secondary schools holistically based on students' strengths, interests and abilities.**



# Preparation

Parents play a vital role in encouraging our children and in helping them map an educational pathway that best fit him/her.



## Parents' Support

01



- 1. Encourage your child**
  - be there when they don't do well or are discouraged
  - to do his/her own revision
- 2. Set routines after school -**
  - ensure child has a proper study place and encourage him/her to complete all homework.



# School Support

01

## 1. Target Setting

- VP/Year Head to visit all classes to encourage students

## 1. Teaching & Learning

- Timely completion of syllabus
- Additional lessons to support students in need.
- ACE programme during June and September.



# HOW THE PSLE SCORING SYSTEM WORKS



# WHAT YOU NEED TO KNOW ABOUT THE NEW PSLE SCORING SYSTEM





## FROM T-SCORE TO SCORING BANDS

- a) Reduces fine differentiation of students' examination results at a young age
- Students with similar scores in each subject are grouped into wider scoring bands measured in 8 ALs.
- b) Reflects a student's individual level of achievement
- Students' ALs for each subject reflect their level of achievement, rather than how they have performed relative to their peers.

## Achievement Levels

AL	RAW MARK RANGE
1	≥ 90
2	85 – 89
3	80 – 84
4	75 – 79
5	65 – 74
6	45 – 64
7	20 – 44
8	< 20

## GRADING OF FOUNDATION SUBJECT GRADES

Foundation subject grades are graded in scoring bands from **AL A to C**.

To derive a student's overall PSLE Score for S1 Posting, AL A to AL C for Foundation level subjects are **mapped to AL 6 to AL 8 of Standard level subjects respectively**.

Similar to the PSLE T-score system, this mapping is based on the learning and assessment load of the subjects, and informs students of how ready they are for the curriculum in secondary school

Foundation Level AL Reflected on Result Slip	Foundation Raw Mark Range	Equivalent Standard Subject AL	Standard Raw Mark Range
<b>A</b>	<b>75 – 100</b>	<b>6</b>	<b>45-64</b>
<b>B</b>	<b>30 – 74</b>	<b>7</b>	<b>20-44</b>
<b>C</b>	<b>&lt; 30</b>	<b>8</b>	<b>&lt;20</b>



# 4 SUBJECT ALs WILL BE ADDED TO FORM THE overall PSLE SCORE

02

- The PSLE Score can range from 4 to 32, with 4 being the best.
- Students are placed in secondary school courses based on their PSLE Score – Express, Normal (Academic) or Normal (Technical).

ENGLISH LANGUAGE	AL 3
MOTHER TONGUE LANGUAGE	AL 2
MATHEMATICS	AL 1
SCIENCE	AL 2

**PSLE SCORE: 8**

PLACEMENT OUTCOME	PSLE SCORE
EXPRESS	4 – 20
EXPRESS / N(A) OPTION	21 – 22
N(A)	23 – 24
N(A) / N(T) OPTION	25
N(T)	26 – 30, with AL 7 or better in both EL and MA



## PSLE Score - Points to Note

- Students taking **Foundation subjects** are eligible for the **Express Course**, as long as they meet the course placement criteria.
- With **Full Subject-based Banding** in secondary schools, students may also take subjects at a higher level for those that they are strong in.



# ELIGIBILITY CRITERIA FOR MOTHER TONGUE LANGUAGE (MTL) 'B' IN SECONDARY SCHOOLS

- The MTL 'B' curriculum is designed to help students in the Express and N(A) courses who face exceptional difficulty coping with MTL.

**ELIGIBILITY CRITERIA FOR MTL 'B'**  
**(FOR STUDENTS OFFERED THE EXPRESS OR N(A) COURSE)**

**AL 7 or 8** in Standard MTL  
or  
**AL B or C** in Foundation MTL

- Schools have discretion to offer MTL 'B' to students who face exceptional difficulty with MTL but do not meet the eligibility criteria at Secondary 1 based on PSLE results.
- As students progress in secondary school, they may also take up MTL 'B' if they are assessed to be suitable by their schools.

# SUBJECT-BASED BANDING (SECONDARY) [SBB (SEC)] ELIGIBILITY CRITERIA

- SBB (Sec) provides students posted to the N(A) and (NT) courses with **greater flexibility** to take various subjects at a more demanding level based on their subject-specific strengths.
- Under the new PSLE Scoring System, the SBB (Sec) eligibility criteria is as follows:

FOR STUDENTS POSTED TO THE N(A) OR N(T) COURSE	
PSLE SUBJECT GRADE	OPTION TO TAKE SUBJECT AT
AL 5 or better in a Standard level subject	Express level
AL 6 or better in a Standard level subject <u>OR</u> AL A in a Foundation level subject	N(A) level

- As students progress in secondary school, they continue to have opportunities at various junctures to take subjects at more demanding levels based on their performance in school.
- Students posted to the Express course will take all their subjects at the Express level.

# SUBJECT-BASED BANDING (SECONDARY) [SBB (SEC)] ELIGIBILITY CRITERIA

**N(A)-Level  
English**

**N(A)-Level  
Mother Tongue**

**Express-  
Level  
Math**

**N(A)-Level  
Science**

## EXAMPLE:

ENGLISH LANGUAGE AL6

MOTHER TONGUE LANGUAGE AL6

**MATHEMATICS AL5**

SCIENCE AL6

---

**PSLE SCORE: 23**

Offered N(A) course



# FULL SUBJECT-BASED BANDING (FULL SBB)

- MOE is expanding Subject-Based Banding to Full SBB in secondary schools.
- This is in line with the changes to PSLE Scoring to recognise each student's own level of achievement and encourage them to choose secondary schools that fit their strengths and interests.
- Full SBB aims to further nurture the joy of learning and develop multiple pathways to cater to the different student profiles. Through Full SBB, we want students to:



- have greater ownership of their education, and learn each subject at the level that best caters to their overall strengths, interests and learning needs, and
- have more opportunities to interact with friends of different strengths and interests.
- not be held back by negative self-concepts and labelling.
- have increased access to post-sec pathways, while having strong fundamentals in their subjects so that they are able to thrive in the pathway they choose.



# FULL SUBJECT-BASED BANDING (FULL SBB)

- The following are changes that students will experience from Full SBB:

- Removal of Express, N(A) and N(T) courses
- Mixed form classes
- Common Curriculum subjects
- Offering subjects at a more demanding level, including Humanities subjects
- Common National Examinations
- Post-secondary Admissions *(More information will be made available at a later date.)*



# FULL SUBJECT-BASED BANDING (FULL SBB) TIMELINE



<https://go.gov.sg/pslefsbb>



2020

Full SBB pilot commenced in 28 secondary schools. Feedback from pilot schools has been positive.



2022

Full SBB will continue to be rolled out to more schools in phases.



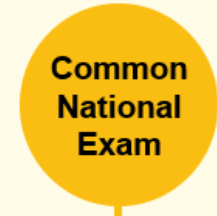
2023



2024

From 2024,

- There will no longer be Express, N(A) and N(T) courses.
- Students will be able to study subjects at different levels that suit their interests, strengths and learning needs.



2027

From 2027, students will sit for the common national examination and receive a new national certification with subjects at different levels.

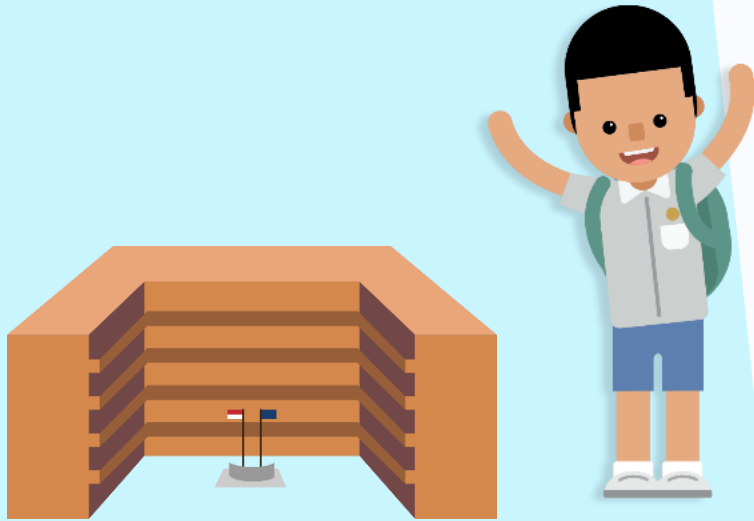
## MTL Exemption

- For students who are exempted from MTL, their **PSLE result** slip will only **reflect the three subjects** they have taken.
- However, for the purposes of Secondary 1 posting, these students will need an assigned MTL score so that they have a PSLE score comprising four subjects.
  - MTL score - reference is made to MTL scores of other students who have achieved similar scores in English, Mathematics, and Science.



# Secondary School Selection

HOW THE S1 POSTING SYSTEM WORKS



## Sec 1 Selection – Choice Order of Schools Matters More

- Students continue to have six choices in selecting their secondary schools.
- Similar to past years, students continue to be posted to a secondary school based on academic merit, i.e., PSLE Score, and their school choice order.
- If there are two or more students with the same PSLE Score vying for the last remaining place(s) in a school, the following tie-breakers will be used in the following order:
  1. CITIZENSHIP
  2. CHOICE ORDER OF SCHOOLS (New tie-breaker from 2021 onwards)
  3. COMPUTERISED BALLOTING
- The new tie-breaker based on school choice order recognises the different considerations that families have in making school choices.



# Tie Breakers

Tie-breakers are used only if there are two or more students with the same PSLE Score vying for the last available place(s) in a school.

5 students are vying for the last places in the schools of their choice.

## Jane

Singapore Citizen  
16 pts

SCHOOL CHOICES:  
1) Sch A  
2) Sch ...  
3) Sch ...  
4) Sch ...



## Bryan

Singapore Citizen  
20 pts

SCHOOL CHOICES:  
1) Sch B  
2) Sch ...  
3) Sch ...  
4) Sch ...



## Mary

Singapore Citizen  
20 pts

SCHOOL CHOICES:  
1) Sch A  
2) Sch B  
3) Sch C  
4) Sch ...



## Alan

Permanent Resident  
20 pts

SCHOOL CHOICES:  
1) Sch A  
2) Sch B  
3) Sch D  
4) Sch ...



## Rina

Permanent Resident  
20 pts

SCHOOL CHOICES:  
1) Sch A  
2) Sch B  
3) Sch D  
4) Sch E



Students with better scores will be posted first

Jane has a better PSLE score. She will be posted first, to **School A**.



Bryan, Mary, Alan and Rina have the same score.

As Jane has taken the last available place in School A, Bryan, Mary, Alan and Rina will vie for the last available place in their next choice, **School B**.

Tie-breaker #1: Citizenship

Bryan and Mary are Singapore Citizens. They will have priority to enter **School B**.



Alan and Rina will be tie-broken out as they are Permanent Residents. They will be considered for their next choice, **School D**.

Tie-breaker #2: Choice order of schools

Because Bryan ranked School B higher than Mary, he will be posted to **School B**.



Since Bryan has taken the last place in School B, Mary will be posted to **School C**.



Alan and Rina have both ranked School D as their third choice. They will go through computerised balloting to vie for the last remaining place in **School D**.

Tie-breaker #3: Computerised balloting

Through computerised balloting, Alan is posted to **School D**.






Since Alan has taken the last place in School D, Rina will be posted to her fourth choice, **School E**.



# PSLE Score Ranges

- The 2021 PSLE Score ranges for individual secondary schools will be available for your reference on <https://moe.gov.sg/schoolfinder> and <https://go.gov.sg/exploreschools> by end March 2022. They reflect the PSLE scores of the student posted into these schools at the 2021 S1 Posting Exercise.
- A school's PSLE Score range (including Cut-Off-Point) for a particular year is not pre-determined before the posting, and may vary from year to year, depending on the cohort's PSLE results and their school choices in that year's S1 Posting Exercise.

SchoolFinder Tool	MySkillsFuture Student Portal (Primary)
  <a href="https://www.moe.gov.sg/schoolfinder">https://www.moe.gov.sg/schoolfinder</a>	 <a href="https://go.gov.sg/exploreschools">https://go.gov.sg/exploreschools</a>

# PSLE SCORE RANGES FOR INDIVIDUAL SECONDARY SCHOOLS

The PSLE Score range refers to the PSLE Score of the first and last student admitted to a particular school in the previous year via the S1 Posting Exercise. This shows the range of student profiles who enter each school.

## Example

XX Secondary School  
PSLE Score range of 2021

Express	15 – 20
Normal (Academic)	21 – 24
Normal (Technical)	25 – 28

PSLE Score of the first student posted into the school in the respective courses

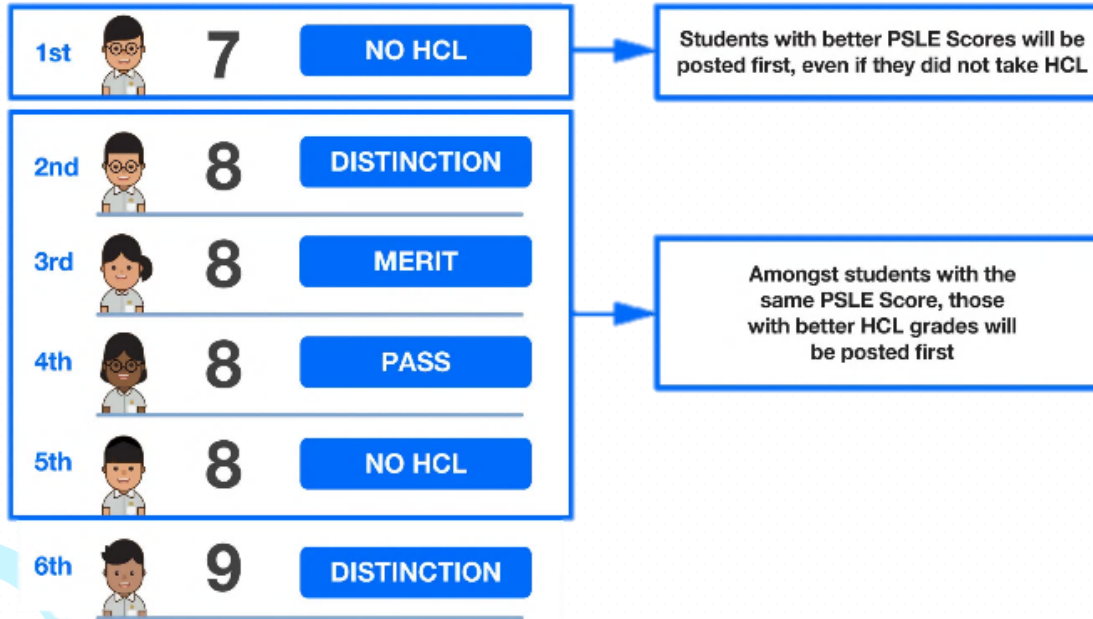
PSLE Score of the last student posted into the school in the respective courses [i.e., the school's **Cut-Off Point (COP)**]



# USE OF HIGHER CHINESE LANGUAGE (HCL) FOR ADMISSION INTO SPECIAL ASSISTANCE PLAN (SAP) SCHOOLS

Students who take HCL will receive a posting advantage when applying to SAP schools

Students will be considered for admission to SAP schools in the following order:



- Students' HCL results are denoted as 'D' (Distinction), 'M' (Merit) or 'P' (Pass).
- Students who obtain (i) a Distinction / Merit / Pass in HCL and (ii) a PSLE Score of 14 or better are eligible for posting advantage to SAP schools.
- Students are ranked taking into account their performance in HCL.
- This posting advantage applies before the tie-breakers for S1 Posting.

# EXAMPLE OF AN SAP SCHOOL'S PSLE SCORE RANGE

While students need not take HCL to enter SAP schools, students who pass HCL receive a posting advantage for admission. To reflect this, the PSLE Score ranges of SAP schools include the HCL grades of the first and last student admitted in the previous year via S1 Posting.

## Example

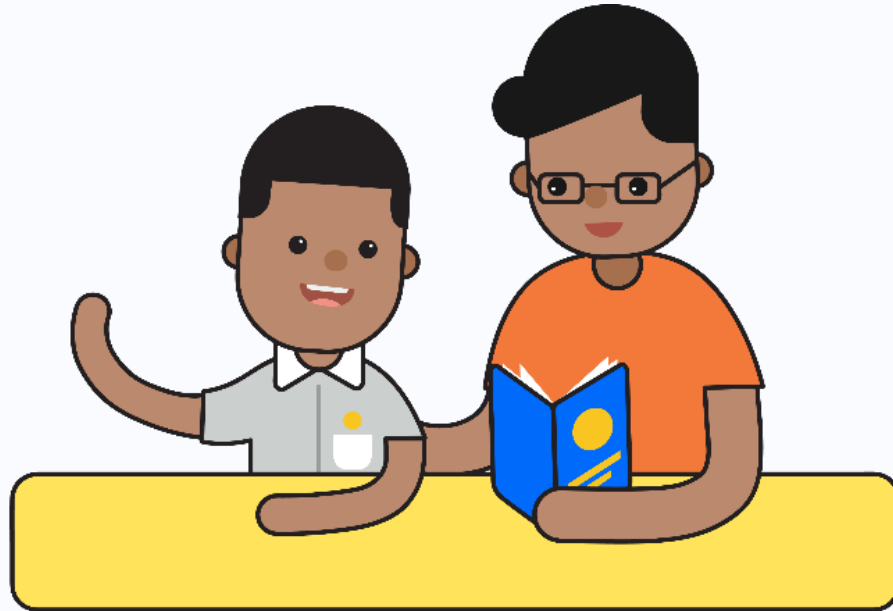
XX Secondary School  
PSLE Score range of 2021

Express	5 (D) – 12 (P)
Normal (Academic)	
Normal (Technical)	

PSLE Score and HCL grade of the first student posted into the school in the Express course

PSLE Score and HCL grade of the last student posted into the school in the Express course [i.e. the school's Cut-Off Point (COP)]

# CHOOSING SUITABLE SECONDARY SCHOOLS WITH YOUR CHILD



# SCHOOL CHOICE JOURNEY

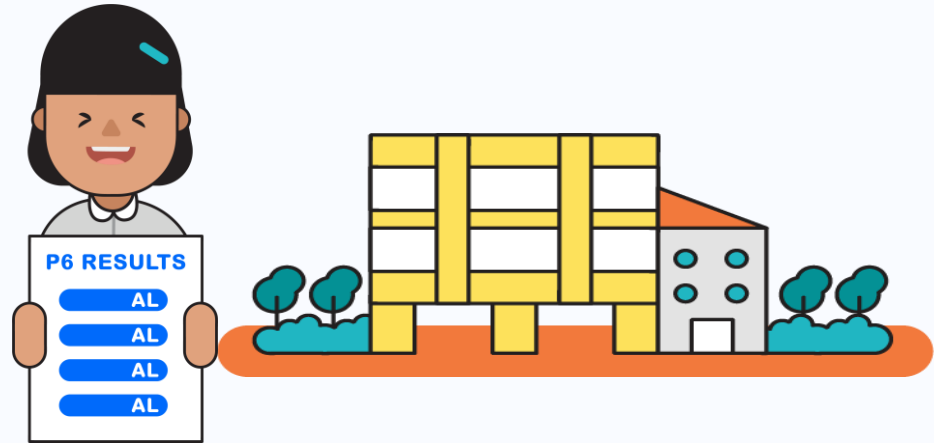
- The PSLE Score ranges are a **useful reference point** for parents and students to consider secondary schools.
- Use this information, together with other **important factors** such as the secondary schools' distinctive programmes, CCAs, ethos and cultures, to shortlist schools that would best fit the educational needs of the student.
- If your child has specific talents and strengths beyond the PSLE (e.g. areas such as sports, performing arts and leadership), consider the **Direct School Admission-Secondary (DSA-Sec)** as an alternative admission pathway to access secondary schools that have talent development programmes in these areas.



# PREPARING FOR THE S1 POSTING EXERCISE

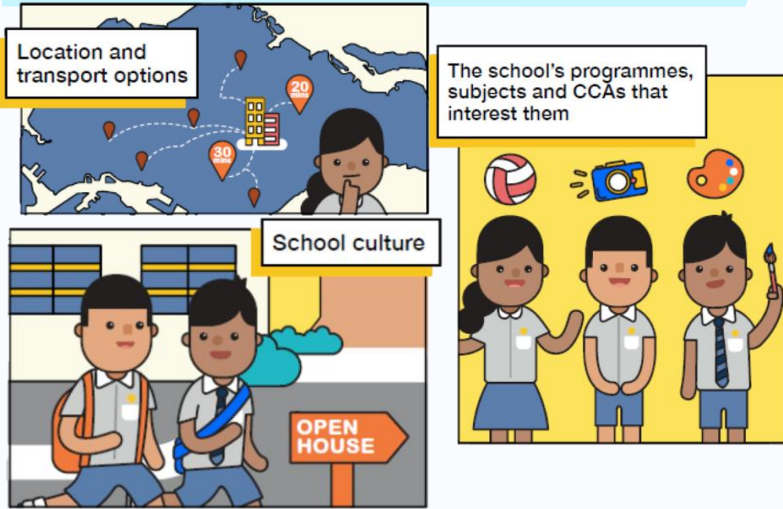


Use all 6 options with a range of Cut-off Points as this will increase your child's chances of being posted to a school of their choice.



Take reference from schools' PSLE Score ranges, which serves as a guide for you and your child to shortlist school choices. Consider at least 2-3 schools where your child's PSLE Score is better than the school's Cut-off Point.

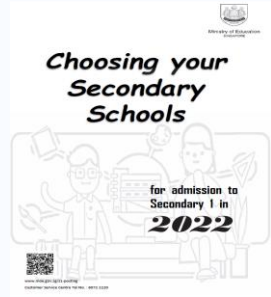
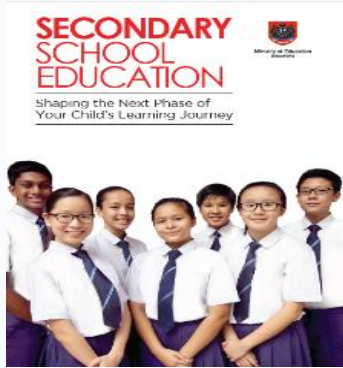
# PREPARING FOR THE S1 POSTING EXERCISE



Shortlist schools that offer programmes that cater to the your child's strengths and interests, and that provide suitable learning environments.

Rank your child's preferred school higher in the school choice order. This will increase your child's chances of being posted to that school, if tie-breakers are required.

# PREPARING FOR THE S1 POSTING EXERCISE



**SCHOOL FINDER**  
*MySKILLSfuture*

- Release of **PSLE** results
- Submission of **Secondary 1 Option Form**



- Release of **S1 Posting results**



**OCTOBER**

**NOVEMBER**

**DECEMBER**

# TIPS FOR PARENTS!

Be open and flexible when discussing your child's preferences, needs and choices.

Have regular conversations with your child to understand more about his/her interests and aspirations.



Manage your own expectations and do not project these expectations onto your child.

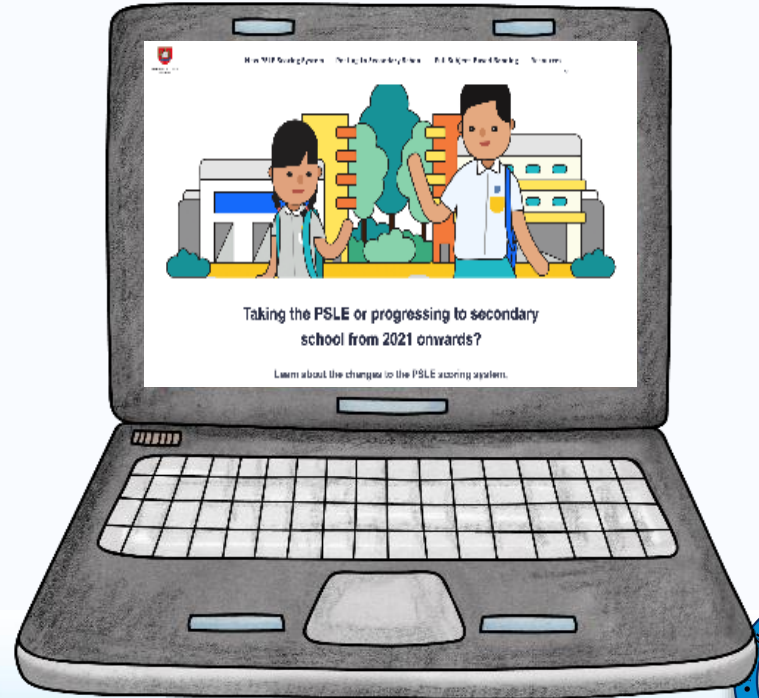
Affirm your child and offer support when he/she shares his/her plans with you.



# FIND OUT MORE ON THE PSLE-FSBB MICROSITE!



<https://go.gov.sg/pslefsbb>



# OTHER RESOURCES

## 1 SchoolFinder Tool

**SCHOOL  
FINDER**



<https://go.gov.sg/secschoolfinder>

## 2 “Welcome to Secondary School”



<https://go.gov.sg/welcome-to-secondary-school>

## 3 Secondary School Education Booklet



<https://go.gov.sg/psle-sec-sch-brochure>

## 4 ECG Parent Guide



<https://go.gov.sg/parent-guide>

# Introducing our P6 Teachers

**P6.1**



**Mr Darren Ng**



**Ms Shamani d/o S. Naidu**

# Introducing our P6 Teachers

**P6.2**



**Mdm Hu Fang**



**Ms Sharifah Mariam Bte  
Syed M S A**

# Introducing our P6 Teachers

**P6.3**



**Mr Christopher Tan  
Theng Kang**



**Mdm Choy Wai Yin**

# Introducing our P6 Teachers

**P6.4**



**Mr Toh Yong Chen Alex**



**Mdm Sangeetha Thamilchelvam**

# Introducing our P6 Teachers

**P6.5**



**Ms Nadia Bte Jumahat**



**Mdm Lim Hwee Tin**

# Introducing our P6 Teachers

**P6.6**



**Mr Abdul Fattah B Abdul Rahim**



**Mdm Zainab Bte Haron**



**Thank You!**



*Confident    Cultured    Aspiring Learners*